

# Social Issues.

David Brain

*New College of Florida*

Emily Talen

*University of Illinois*

# What is our role in the charrette?

- By using GIS to map demographic data and assembling anecdotal local knowledge, we can offer help to the design teams in understanding:
  - the challenges of rebuilding *communities*.
  - the character and social diversity of the communities of the Gulf Coast.
  - the social characteristics of different neighborhoods, and to understand the needs of diverse populations.
  - the social assets and the relatively vulnerable populations of these communities.

# Research on recovery.

- People and population who have the hardest time in the aftermath of a disaster are those who had limited resources and fewer options prior to the disaster.
- Low income people and families depend most heavily on place-based social support networks.
- Relatively isolated people and populations are most likely to have:
  - unmet needs,
  - long term problems;
  - frustration and distrust of government and agencies of recovery and rebuilding.

# Social capital

- Patterns and habits of association generate important social resources:
  - Safety and security.
  - Sense of community.
  - Problem-solving capacity.
  - “Collective efficacy”
  - Civic engagement: Trust and responsibility necessary for democratic self governance.

# Case of HOPE VI

- Unintended effects of relocating people “temporarily” with the goal of “deconcentrating” poverty:
  - Disruption of social support networks.
  - Worsening of living conditions.
  - Undermining the ability of some to “move to opportunity.”

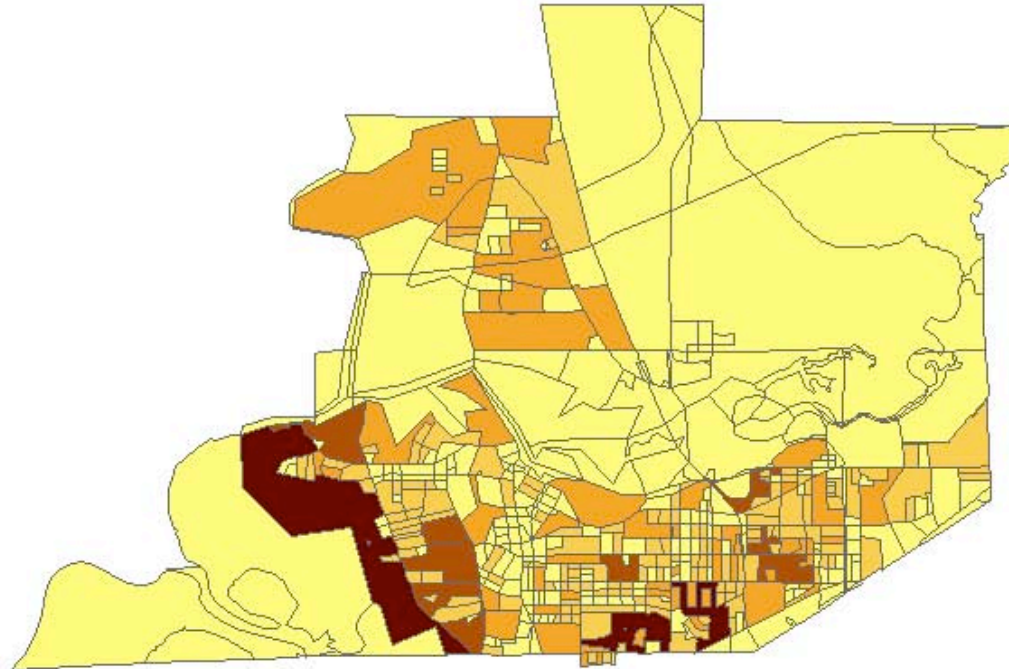
# Ideas for reconstituting neighborhoods

- Temporary, transitional, and permanent housing construction inserted in restoration of neighborhoods.
- "Centers."
  - Places for people to gather.
  - Facilitate opportunities for returning residents to create and inhabit shared places.
  - Don't forget about neighborhood oriented businesses and variety of "third places" as neighborhood institutions.
- Civic engagement.
  - Involving citizens in a the process of planning and building the future of their communities.
  - Reconstituting social capital by using opportunities to convene stakeholders.
  - Reviving and coordinating the participation of community-based organizations (faith-based organizations, civic associations, social service providers, and others).

# Getting to know the neighborhoods and cities.

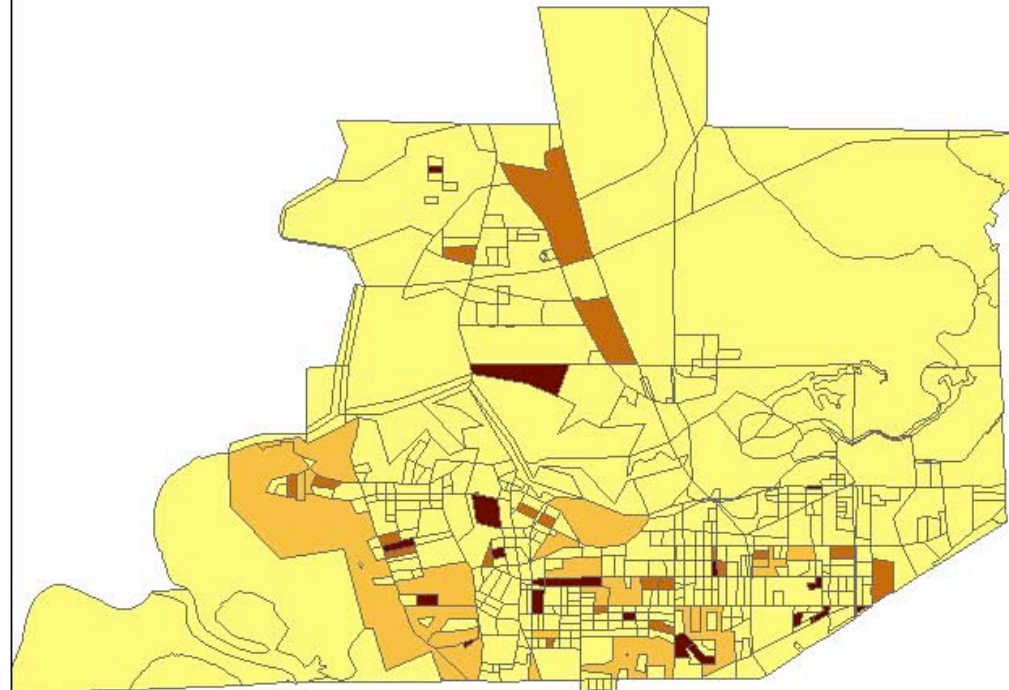
- Design teams need to get familiar with the available data resources.
- An example from Moss Point.

# Moss Point, Child density (by Census block).





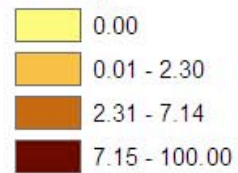
# Moss Point, Percent Hispanic (by Census block).



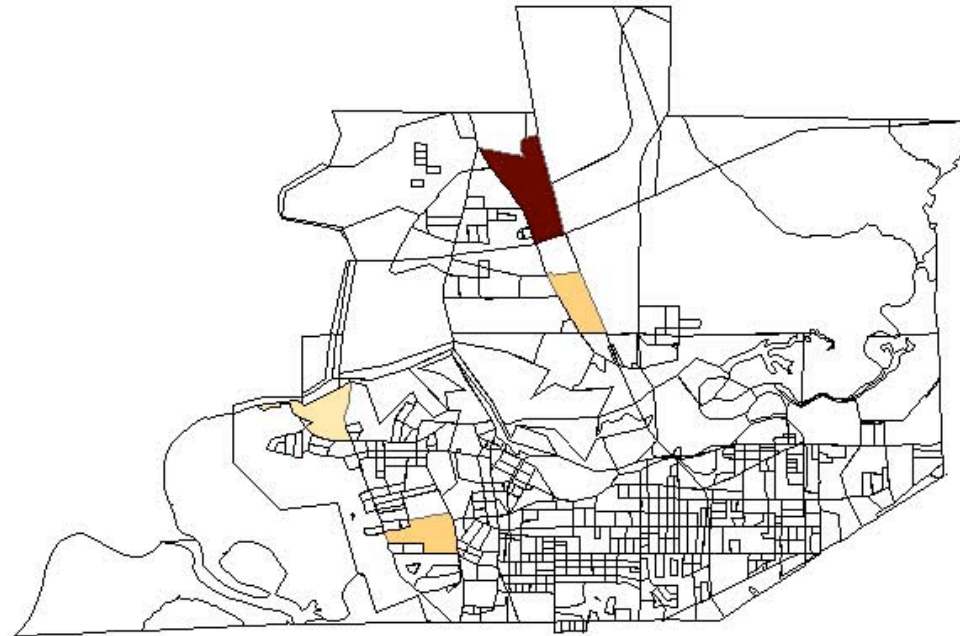
## Legend

### MossPoint

#### PctHisp



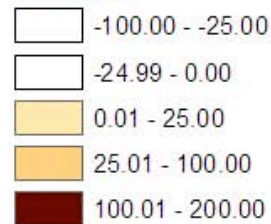
# Moss Point, Change in Hispanic Population (by Census block).

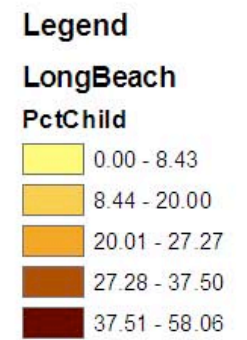
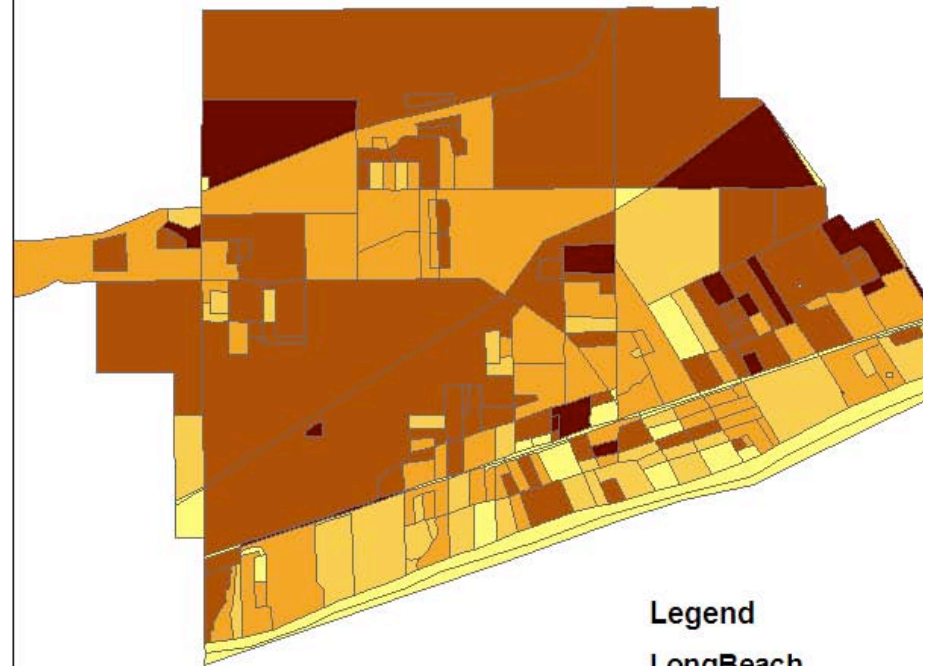
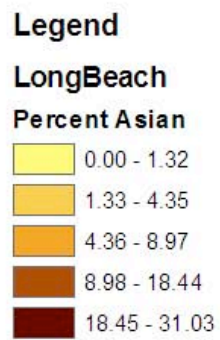
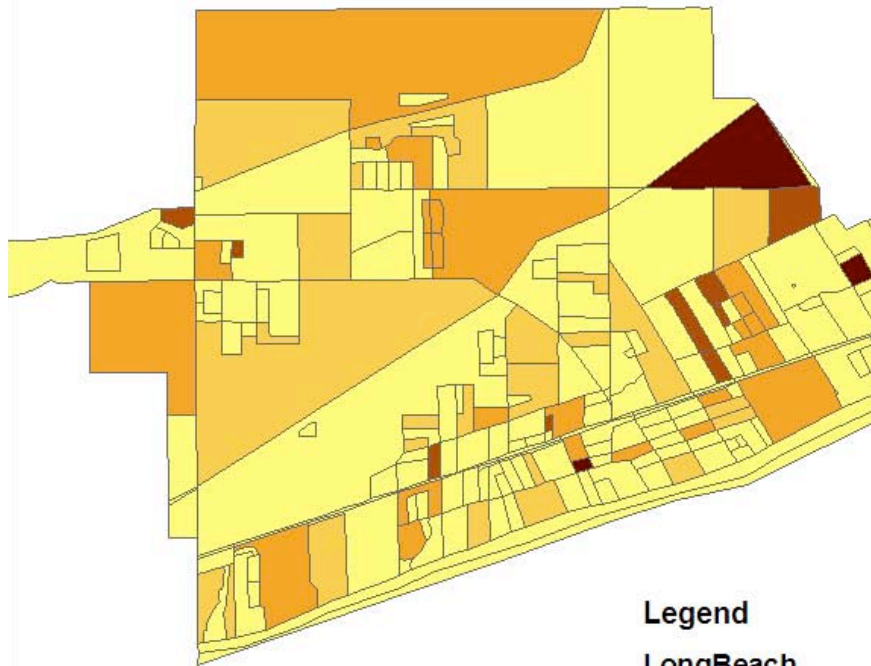


## Legend

### MossPoint

### ChgHisp







Thank you...